

## About this Article

This material was included with the downloadable supplemental content accompanying the *ARRL Antenna Book*.

You may print a copy of this material for personal use. Any other use of the information requires permission from the ARRL.

## Copyright/Reprint Notice

In general, all ARRL content is copyrighted. ARRL articles, pages, or documents – printed and online – are not in the public domain. Therefore, they may not be freely distributed or copied. Additionally, no part of this document may be copied, sold to third parties, or otherwise commercially exploited without the explicit prior written consent of the ARRL. You cannot post this document to a website or otherwise distribute it to other through any electronic medium.

For permission to quote or reprint material from ARRL, send a request including the issue date, a description of the material requested, and a description of where you intend to use the reprinted material to the ARRL Editorial and Production staff at: **[permission@arrl.org](mailto:permission@arrl.org)**.

# Double Cross — A NOAA Satellite Downlink Antenna

*An easy to build antenna for ground reception of NOAA weather or amateur satellite signals.*

Gerald Martes, KD6JDJ

**US** National Oceanographic and Atmospheric Administration (NOAA) polar orbiting weather satellites (POES) transmit data for production of gray scale images of the ground below them.<sup>1</sup> These automatic picture transmissions (APT) signals are sent at 137 MHz and are available twice a day to anyone on the earth. There are many free programs available that can decode the satellite signals and then produce color images on a personal computer. I prefer *APTDecoder* by Patrik Tast, available on the Internet.<sup>2</sup>

## Antennas for POES Satellite Reception

The NOAA weather satellites are polar orbiting, so they can and do appear at all azimuth and elevation directions from any ground location. An ideal ground-based antenna for reception of NOAA satellite signals would be right-hand circularly polarized (RHCP) and have no deep pattern minimums within the hemisphere. Figure 1 shows the ideal pattern shape of a ground-based antenna for APT reception. It would have a 12 dB minimum toward zenith since the satellites will be approximately 12 dB stronger when overhead as compared to their strength when at the horizon due to path loss.

This ideal pattern cannot quite be obtained for a ground-based receiving antenna for VHF. But it is a useful guide to remind the antenna designer that the ground-based antenna pattern should have a minimum of nulls within the hemisphere, with a maximum toward the horizon.

Four dipoles can be mounted as shown in Figure 2 to produce a radiation pattern with excellent RHCP at 0° elevation in the free space radiation pattern as shown in Figure 3. The design concept for this four dipole array with hemispheric coverage with RHCP is derived from the fundamental concept that two dipoles, crossed, spaced a quarter wave

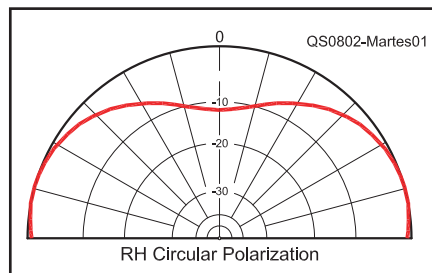


Figure 1 — Ideal radiation pattern for a ground-based antenna for reception of NOAA weather satellite images.

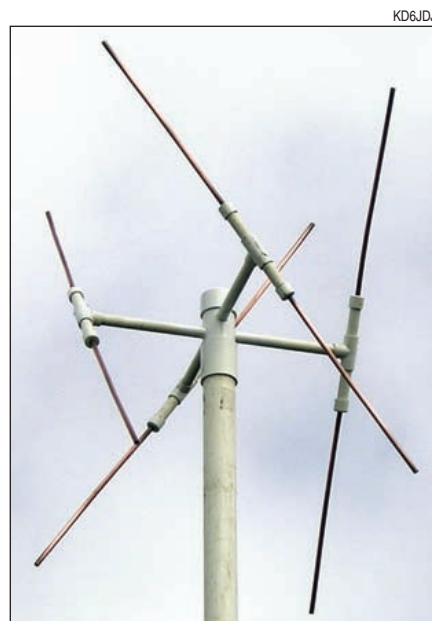


Figure 2 — The four dipoles that make up the Double Cross antenna prototype.

apart, and fed in phase as shown in Figure 4 can be polarized to produce a pattern as shown in Figure 5.

The pattern null along the X axis can be filled in by including a second pair of crossed dipoles as shown in Figure 6. If the second pair is fed 90° later than the first pair, the four dipole array has the excellent radiation pattern shown in Figure 7.

## Double Cross as an Amateur Satellite Antenna

The Double Cross can also be built as

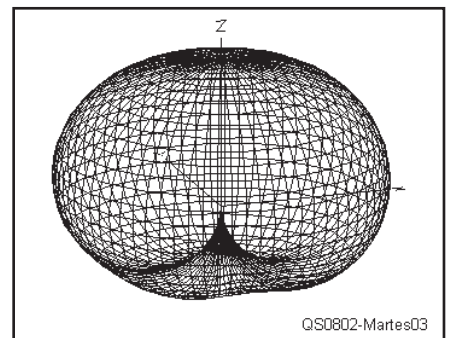


Figure 3 — The free space three dimensional pattern of the Double Cross closely matches our design goal.

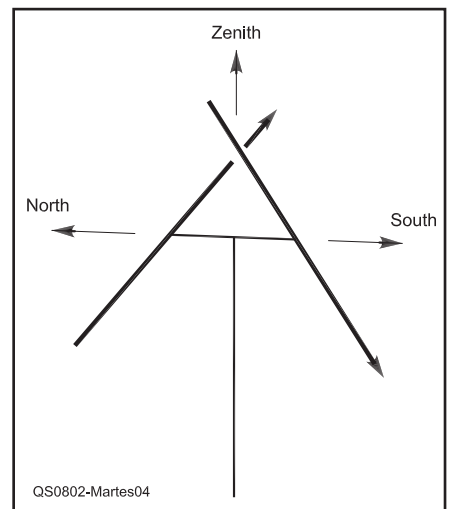


Figure 4 — One pair of crossed dipoles makes half a Double Cross.

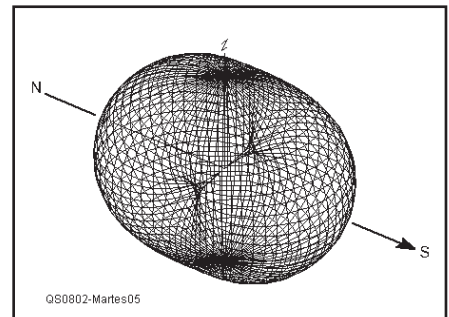
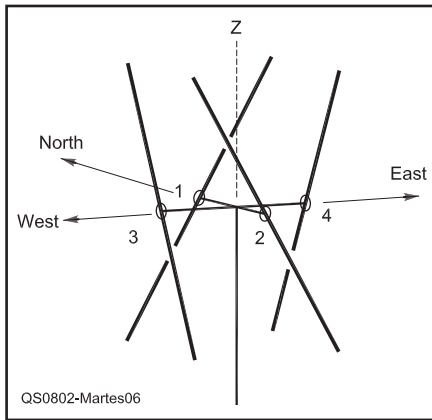


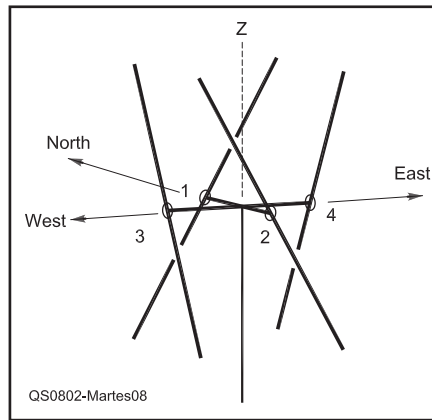
Figure 5 — Free space radiation pattern of crossed dipoles.

<sup>1</sup>[www.oso.noaa.gov/poesstatus/index.asp](http://www.oso.noaa.gov/poesstatus/index.asp).

<sup>2</sup>[www.poes-weather.com/](http://www.poes-weather.com/).



**Figure 6 — Two pairs of crossed dipoles become the Double Cross.**



**Figure 8 — Dielectric support for the dipoles and harness.**

**Table 1**  
**Dimensions of Double Cross Array (Inches)**

Operating Frequency (MHz)	137	145	435
Dipole length	38.25	37.125	12.125
Dipole diameter	0.375	0.375	0.25
Dipole spacing	21.5	20.5	6.75
Poly coax $\lambda/4$ phasing section	14.25	13.5	4.5

the dielectric support.

Build four dipoles from a convenient conductor, each about 38 inches long, and attach them to the supports. The dipole supports numbers 1 and 2 are separated by about 20 inches. The dipoles number 3 and 4 are also separated by 20 inches. Each of the four dipole supports is tilted  $30^\circ$  from vertical.

Dipoles 1 and 2 are fed in phase and with the proper polarity, so the upward pointing end of dipole #1 has the same polarity as the downward pointing end of dipole 2. The upward pointing end of dipole 3 has the same polarity as the downward pointing end of dipole 4.

The input impedance of each of the  $\lambda/2$  dipoles when configured as shown will be very close to  $50\ \Omega$ . Each pair is wired in series to have an impedance of  $100\ \Omega$ . After connecting the two pairs in parallel, as shown in the harness diagram of Figure 9, we end up with the desired  $50\ \Omega$  for the run to the radio.

an antenna for amateur frequencies. Table 1 shows the dimensions for both NOAA and amateur satellite bands. Note that circular polarization toward the horizon is also useful for terrestrial communication, since it responds equally well to both vertical (for FM) and horizontal (for SSB and CW) polarization.

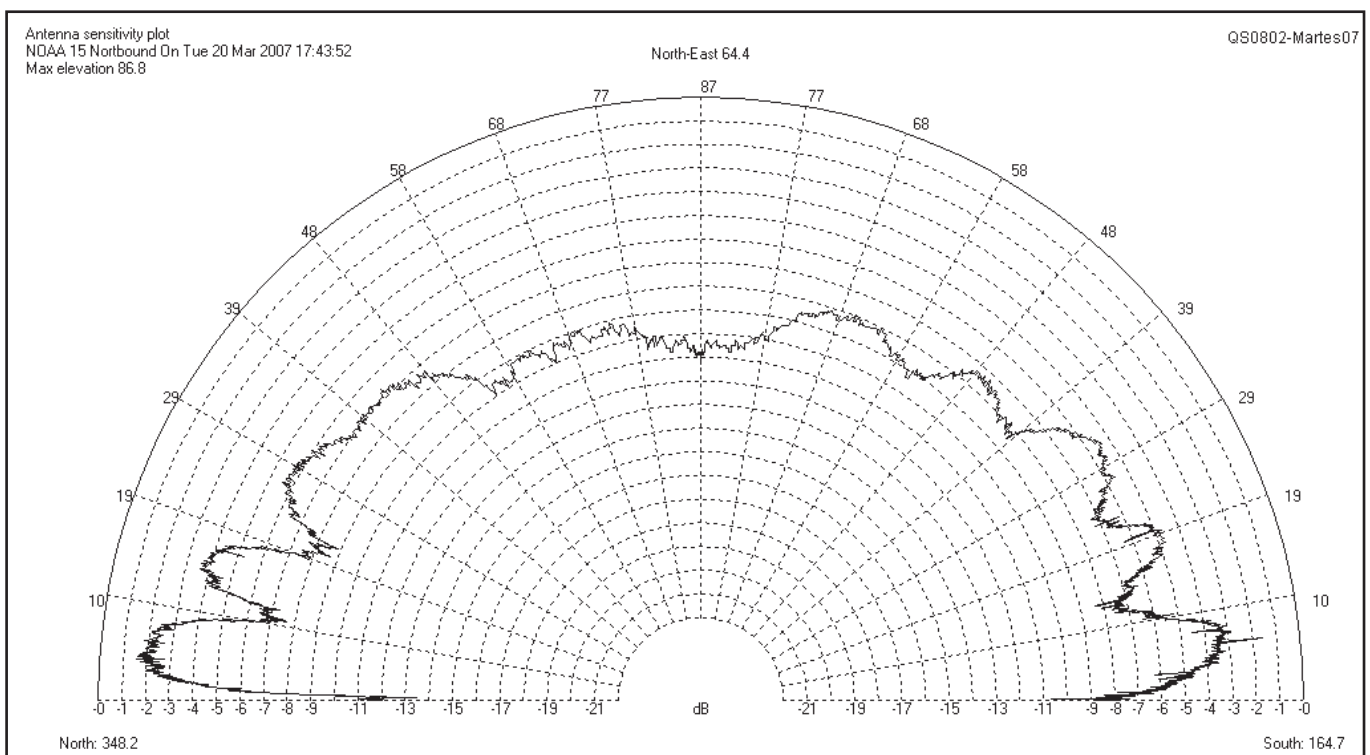
## Making it Happen

One beneficial aspect of this Double Cross antenna is that it is quite tolerant of construction variations. That is, an antenna in this configuration will almost always work well even when the dimensions are only close to the optimum design. The only

thing critical is the proper connection of the harness to the dipoles.

Field testing with this antenna indicates that it produces very little radiation pattern nulling within the hemisphere. Pattern nulls would be expected to produce dark horizontal lines across the image. The images, recorded with the Double Cross thus far constructed and tested, have indicated that very little image quality degradation is seen as a result from elevation plane nulls from ground reflection.

A Double Cross APT antenna can be built by constructing a dielectric support as shown in Figure 8 and attaching the dipoles and harness, as described later, to



**Figure 7 — The measured pattern of the Double Cross antenna closely matches the ideal of Figure 1.**

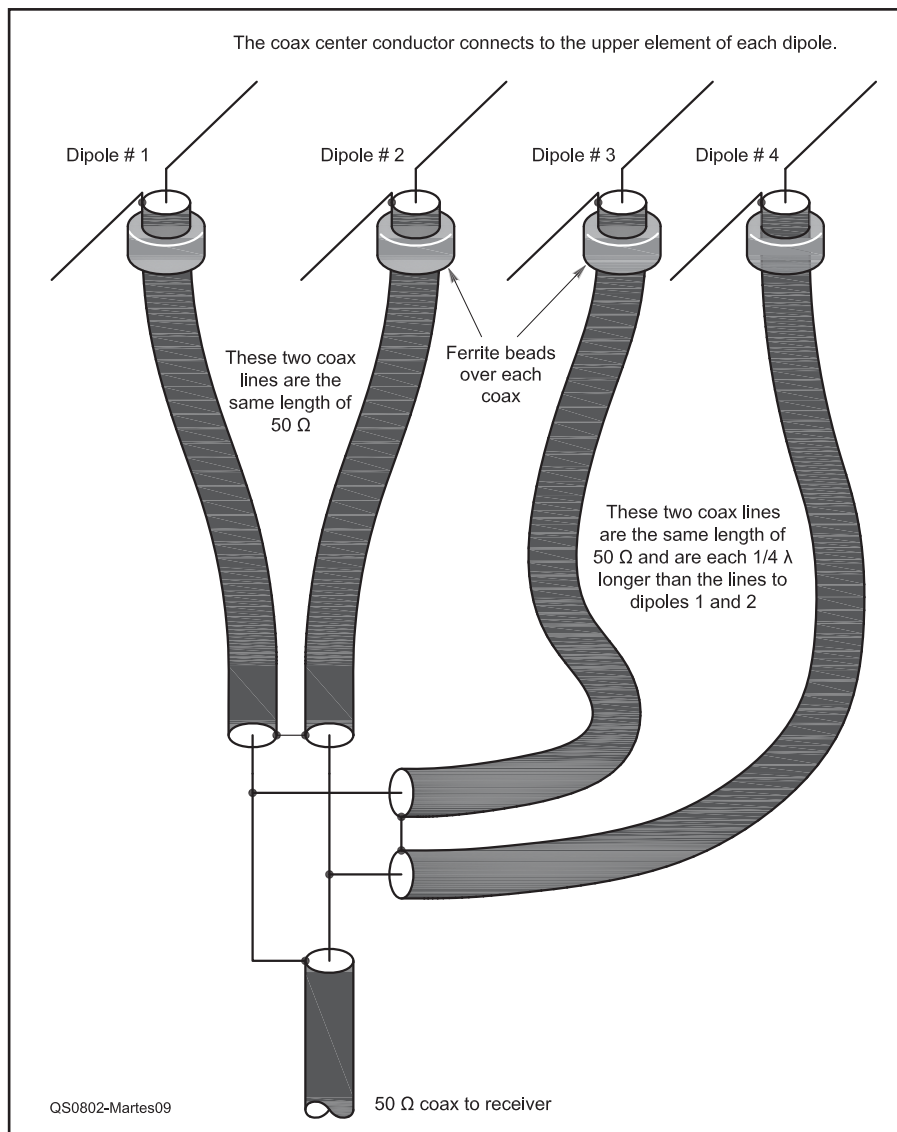


Figure 9 — Harness for Double Cross using 50 Ω coax.



Figure 10 — Photograph of the Double Cross antenna mounted  $2 \lambda$  above ground, at the beach in Southern California.

### It Works!

The antenna works very well, either from my home station or on the road, as shown in Figure 10. A sample of the received signal is shown in Figure 11.

*Gerald Martes, KD6JDJ, has been licensed, on and off since 1949. He received his first license and call KL7LL while in the USAF in Alaska. He took the test again in the 1950s and had the call K6LZC. Several years ago, he took the General class exam and barely passed it but is now KD6JDJ and promises not to let this one lapse. He also held commercial First Class Radiotelephone and Radiotelegraph licenses, including CW at 20 WPM.*

*Gerald earned a BSEE from Pacific States University and was employed as an antenna design engineer from 1955 through 1970. He then started his own electrical business and never went back to engineering.*

*Gerald can be reached at 5061 Tripoli Ave, Los Alamitos, CA 90720 or at [j.jmartes@verizon.net](mailto:j.jmartes@verizon.net).*

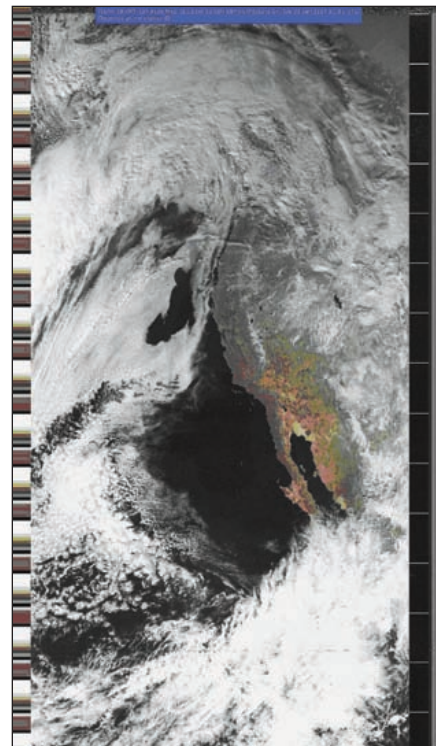


Figure 11 — NOAA satellite image from Double Cross at  $2 \lambda$  height.

Did you enjoy this article?  
Cast your vote at:



[www.arri.org/members-only/qstv.html](http://www.arri.org/members-only/qstv.html)

## New Products

### MFJ TELESCOPING MASTS

◇ MFJ telescoping masts are available in several models. All versions are made from 0.125 inch wall fiberglass tubing ranging from 2 inches OD at the bottom to  $\frac{3}{4}$  inch OD at the top. The masts require guying at two levels when fully extended and are designed to support wire dipoles, verticals, loops and even small Yagis. The MFJ-1906 and MFJ-1908 sections are secured with stainless steel hose clamps requiring a screwdriver or nut driver. The MFJ-1906H and MFJ-1908H use “quick clamps.” MFJ-1906 versions have six sections (6 feet each), are 33 feet extended and weigh 13 pounds. MFJ-1908 versions have six sections (8 feet each), are 43 feet extended and weigh 16 pounds. Prices: MFJ-1906, \$139.95; MFJ-1906H, \$189.95; MFJ-1908, \$179.95; MFJ-1908H, \$229.95; Hy-Gain ATB-65 mast base mount, \$69.95. To order, or for your nearest dealer, call 800-647-1800 or see [www.mfjenterprises.com](http://www.mfjenterprises.com).